



## Campus facilities for disable special needs

University : Shakarim University

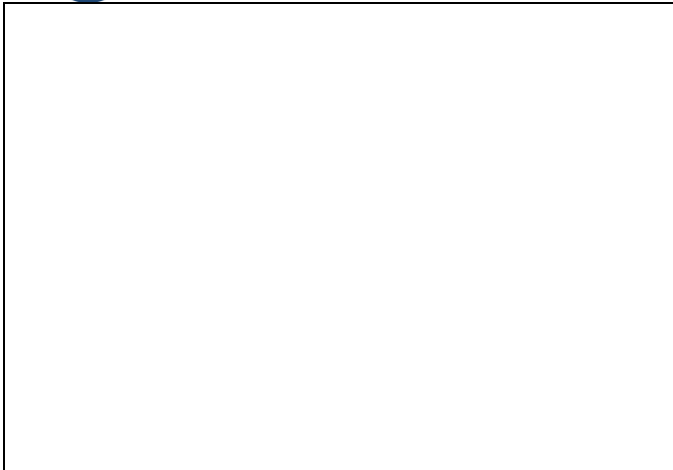
### Campus facilities for disable, special needs



Map indicating wheelchair ramps







Handicapped parking



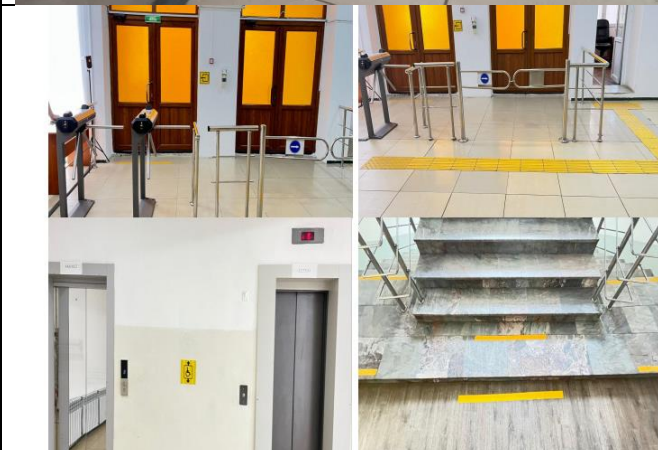
Toilet for disabled people



Elevator

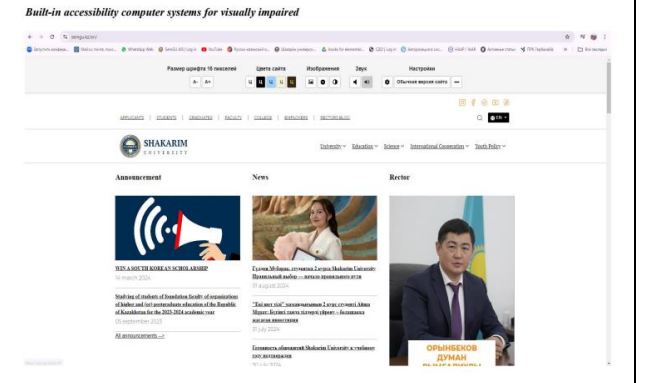
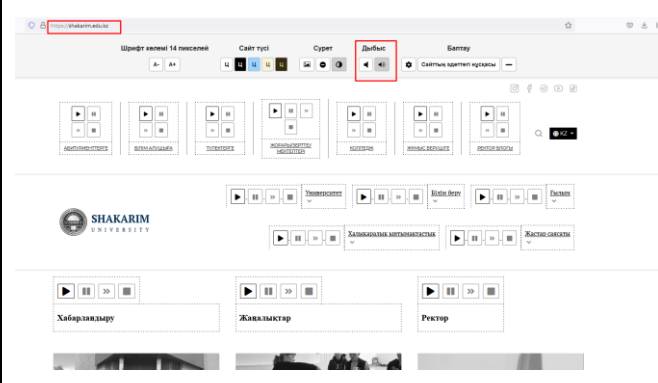


Warning contrast stripes for the visually impaired



Warning contrast stripes for the visually impaired

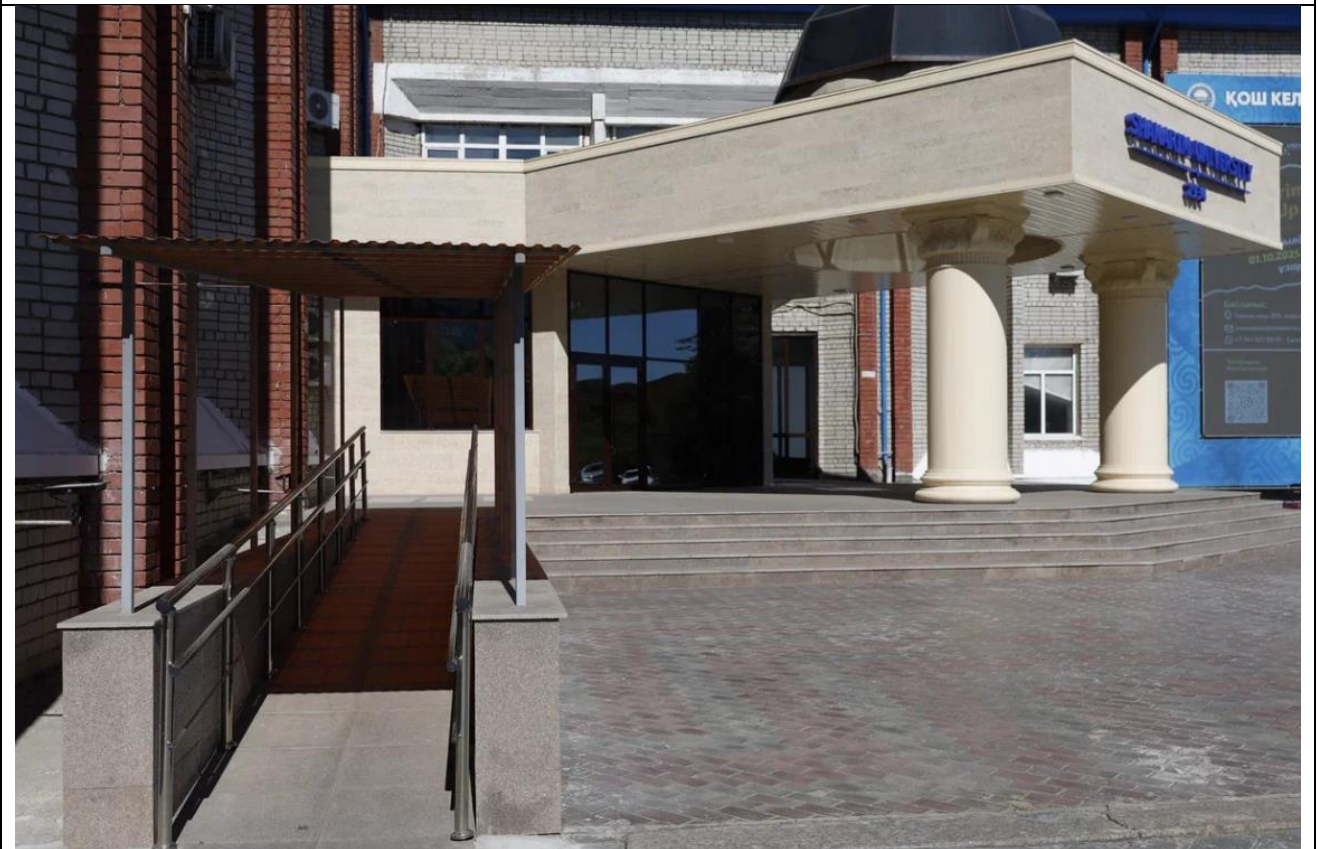
Button to call for help



Integrated computer systems for the visually impaired



Multilift Vertical Platform Lift



Ramp



**Description:**

1. Map indicating wheelchair ramps
2. Handicapped parking, where people with disabilities can park their vehicle, is located at the nearest building
3. Toilet for disabled people
4. Elevator
5. Warning contrast stripes for the visually impaired
6. Button to call for help
7. Official website for the visually impaired people
8. Multilift Vertical Platform Lift

Shakarim University pays great attention to providing an inclusive and accessible campus environment for people with disabilities and special needs.

All buildings on campus are equipped with **wheelchair ramps** or **multilift vertical platform lifts**, **elevators**, **accessible toilets**, and **warning contrast stripes** for the visually impaired. Each building also includes **buttons for calling assistance**, and the university maintains an **official website for visually impaired users**.

The university has developed and implemented a **Roadmap for Inclusive Education**, which is updated regularly after assessment and analysis. A **Coordinator for Inclusive Education** position has been established, and a **Psychological Support Service** operates continuously to assist students and staff with disabilities and special needs.

Handicapped parking areas are located adjacent to academic and administrative buildings, ensuring accessibility from parking spaces to campus facilities.

<b>Facility Type</b>	<b>Availability</b>	<b>Description</b>
Wheelchair ramps	Available	Installed at entrances of all academic and administrative buildings
Multilift Vertical Platform Lifts	Available	Installed where ramp access is not possible
Elevators	Available	Installed in multi-story buildings
Accessible toilets	Available	Provided in main academic and administrative buildings
Warning contrast stripes	Available	Placed on stairs and corridors for the visually impaired
Assistance call buttons	Available	Installed at building entrances and accessible toilets
Handicapped parking	Available	Located near the main academic and administrative buildings
Integrated computer systems for the visually impaired	Available	Accessible in library and computer rooms
Official website for the visually impaired	Available	<a href="https://shakarim.university/en/page/inkluzivti-bilim-beru">https://shakarim.university/en/page/inkluzivti-bilim-beru</a>

**Support Services**

- **Coordinator for Inclusive Education** – manages inclusive education processes.
- **Psychological Support Service** – provides mental health support.
- **Medical Center** – offers medical assistance and health-related guidance for students and staff.
- **Center for Social Support and Youth Development** – supports social inclusion activities.



**Additional evidence link (i.e., for videos, more images, or other files that are not included in this file):**

<https://shakarim.university/en/page/inkliuzivti-bilim-beru>

<https://shakarim.university/en/development-goals#goals>

<https://shakarim.university/en/development-goals#documents>

<https://shakarim.university/en/structure/psychological-support-service>

<https://shakarim.university/en/structure/medical-center>

<https://shakarim.university/en/page/kampus-resurstary-men-qyzmetter>